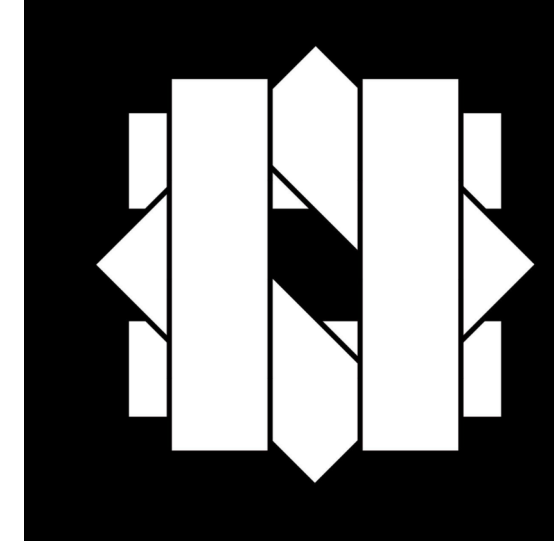


CONSTRUCTION LEGEND

- TERRACE NON-PAVED AREA
- TERRACE PLANTING AREA
- GRAVEL AREA
- CONCRETE PAVERS
- REMOVABLE WALK-OFF MAT
- FULL HEIGHT INTERIOR GLASS PARTITION
- FULL HEIGHT GIB WALL
- CONCRETE MASONRY UNIT WALL
- UNITIZED CURTAIN WALL SYSTEM
- STOREFRONT SYSTEM
- INTERIOR GLAZED RAILINGS
- EXTERIOR MESH RAILINGS
- EXTERIOR METAL PICKET RAILINGS
- LOADING DOCK COOLING DOOR
- METAL FRAMED PICKET LIGHT SYSTEM
- PHOTOVOLTAIC ROOF PANELS
- ROOF DRAIN AND OVERFLOW DRAIN



ROBERT DAY SCIENCES CENTER

CLAREMONT MCKENNA COLLEGE
 500 NORTH STREET
 CLAREMONT, CA 91711 USA

CLIENT
 CLAREMONT MCKENNA COLLEGE
 500 NORTH STREET
 CLAREMONT, CA 91711 USA

ARCHITECT
BIG
 STRUCTURAL ENGINEER

MECHANICAL, ELECTRICAL, PLUMBING ENGINEER
 DESIGN PARTNER CONSULTANT

ELECTRICAL ENGINEER
 DESIGN PARTNER CONSULTANT

MEP LEAD CONSULTANT
 WSP USA

LAB PLANNING CONSULTANT
 JACOBS

MECHANICAL, ELECTRICAL, PLUMBING ENGINEER
 DESIGN PARTNER CONSULTANT

LEARNING DESIGN CONSULTANT
 KOM ARCHITECTURAL LIGHTING

MECHANICAL, ELECTRICAL, PLUMBING ENGINEER
 DESIGN PARTNER CONSULTANT

MECHANICAL, ELECTRICAL, PLUMBING ENGINEER
 DESIGN PARTNER CONSULTANT

MECHANICAL, ELECTRICAL, PLUMBING ENGINEER
 DESIGN PARTNER CONSULTANT

MECHANICAL, ELECTRICAL, PLUMBING ENGINEER
 DESIGN PARTNER CONSULTANT

MECHANICAL, ELECTRICAL, PLUMBING ENGINEER
 DESIGN PARTNER CONSULTANT

MECHANICAL, ELECTRICAL, PLUMBING ENGINEER
 DESIGN PARTNER CONSULTANT

MECHANICAL, ELECTRICAL, PLUMBING ENGINEER
 DESIGN PARTNER CONSULTANT

MECHANICAL, ELECTRICAL, PLUMBING ENGINEER
 DESIGN PARTNER CONSULTANT

MECHANICAL, ELECTRICAL, PLUMBING ENGINEER
 DESIGN PARTNER CONSULTANT

MECHANICAL, ELECTRICAL, PLUMBING ENGINEER
 DESIGN PARTNER CONSULTANT

MECHANICAL, ELECTRICAL, PLUMBING ENGINEER
 DESIGN PARTNER CONSULTANT

MECHANICAL, ELECTRICAL, PLUMBING ENGINEER
 DESIGN PARTNER CONSULTANT

MECHANICAL, ELECTRICAL, PLUMBING ENGINEER
 DESIGN PARTNER CONSULTANT

MECHANICAL, ELECTRICAL, PLUMBING ENGINEER
 DESIGN PARTNER CONSULTANT

MECHANICAL, ELECTRICAL, PLUMBING ENGINEER
 DESIGN PARTNER CONSULTANT

MECHANICAL, ELECTRICAL, PLUMBING ENGINEER
 DESIGN PARTNER CONSULTANT

MECHANICAL, ELECTRICAL, PLUMBING ENGINEER
 DESIGN PARTNER CONSULTANT

MECHANICAL, ELECTRICAL, PLUMBING ENGINEER
 DESIGN PARTNER CONSULTANT

MECHANICAL, ELECTRICAL, PLUMBING ENGINEER
 DESIGN PARTNER CONSULTANT

MECHANICAL, ELECTRICAL, PLUMBING ENGINEER
 DESIGN PARTNER CONSULTANT

MECHANICAL, ELECTRICAL, PLUMBING ENGINEER
 DESIGN PARTNER CONSULTANT

MECHANICAL, ELECTRICAL, PLUMBING ENGINEER
 DESIGN PARTNER CONSULTANT

MECHANICAL, ELECTRICAL, PLUMBING ENGINEER
 DESIGN PARTNER CONSULTANT

MECHANICAL, ELECTRICAL, PLUMBING ENGINEER
 DESIGN PARTNER CONSULTANT

MECHANICAL, ELECTRICAL, PLUMBING ENGINEER
 DESIGN PARTNER CONSULTANT

MECHANICAL, ELECTRICAL, PLUMBING ENGINEER
 DESIGN PARTNER CONSULTANT

MECHANICAL, ELECTRICAL, PLUMBING ENGINEER
 DESIGN PARTNER CONSULTANT

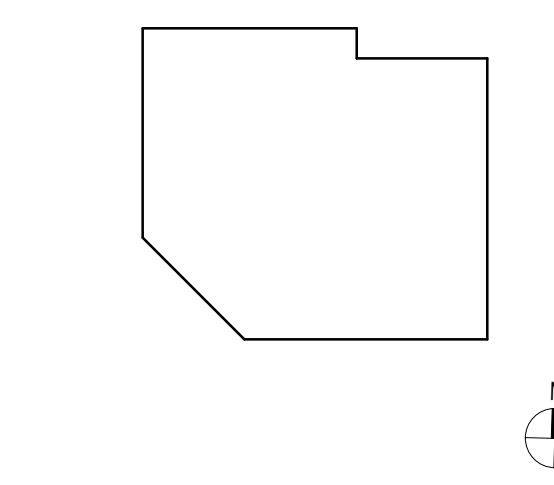
GENERAL NOTES

1. FOR DETAILED TERRACE AND SITE LANDSCAPE PLANS REFER TO LANDSCAPE DRAWINGS.
2. ALL VISIBLE STRUCTURAL STEEL FRAMING MEMBERS TO BE FIREPROOFED WITH INTUMESCENT PAINT (ES REPORT NO. 5078) OR ENCASED IN CONCRETE AS REQUIRED FOR TYPE I-B CONSTRUCTION.
3. SKYLIGHT AT ROOF LEVEL SIZED TO BE LESS THAN 10% OF ROOF AREA TO COMPLY WITH ENERGY REQUIREMENTS. ACTUAL AREA AS SHOWN IN PLANS IS 3.0% OF ROOF AREA.
4. ALL AREAS AT LOW CLEARANCE ZONES LESS THAN 8' AND FLOOR-HEIGHT TRANSITIONS OF LESS THAN 30" TO BE PROVIDED WITH CANE RAILS FOR CANE DETECTION. REFER TO SHEET A-140 FOR CANE RAIL DETAILS. CANE RAILS TO BE CD-01 TYPICAL, UNLESS OTHERWISE NOTED AS CD-04, FE-01 OR FE-02.
5. SEE SHEET A-375 FOR TYPICAL ENTRY WALK OFF MAT PLANS AND DETAILS.
6. ALL CLASSROOM/STRUCTIONAL ASSEMBLY SPACES TO BE PROVIDED WITH A PERMANENTLY INSTALLED ASSISTIVE LISTENING SYSTEM. MINIMUM NUMBER OF RECEIVERS TO BE PROVIDED SHALL BE 4% OF THE TOTAL NUMBER OF SEATS PER 2019 CBC 11B-219.3. REFER TO A-460 FOR LARGE SEMINAR ROOM AND FOR SEATING QUANTITY. NUMBER OF RECEIVERS IN ALL OTHER CLASSROOMS WITH LOOSE SEATING TO BE PROVIDED WITH FF&E DEFERRED SUBMITTAL FOR APPROVAL.
7. WHERE SEATING IS PROVIDED IN ACCESSIBLE SPACES, AT LEAST 1% BUT NOT LESS THAN ONE OF EACH TYPE, MUST BE ACCESSIBLE PER CBC 11B-212.3, 2010 STANDARDS 210.3. A 30"x48" MINIMUM CLEAR FLOOR SPACE, POSITIONED FOR FORWARD APPROACH WITH KNEE AND TOE CLEARANCE IS REQUIRED AT A BANK. CBC 11B-806.2, 2010 STANDARDS 806.2.
8. WHERE SEATING OR STANDING SPACE AT TABLES, COUNTERS OR WORK SURFACES IS PROVIDED IN ACCESSIBLE SPACES, AT LEAST 5 PERCENT OF THE SEATING AND STANDING SPACES, BUT NOT LESS THAN ONE, MUST BE ACCESSIBLE. (CBC 11B-208.1)

NO.	DATE	ISSUE
3	05-29-2024	BULLETIN 4
2	03-23-2023	BULLETIN 2
1	05-19-2023	BULLETIN 1
	03-17-2023	ISSUED FOR CONSTRUCTION
	12-16-2022	50% CONSTRUCTION DOCUMENTS
	09-19-2022	PLAN CHECK SUBMISSION
	05-13-2022	PLAN CHECK / 50% DESIGN DEVELOPMENT
	03-02-2022	100% SCHEMATIC DESIGN
	01-25-2022	50% SCHEMATIC DESIGN

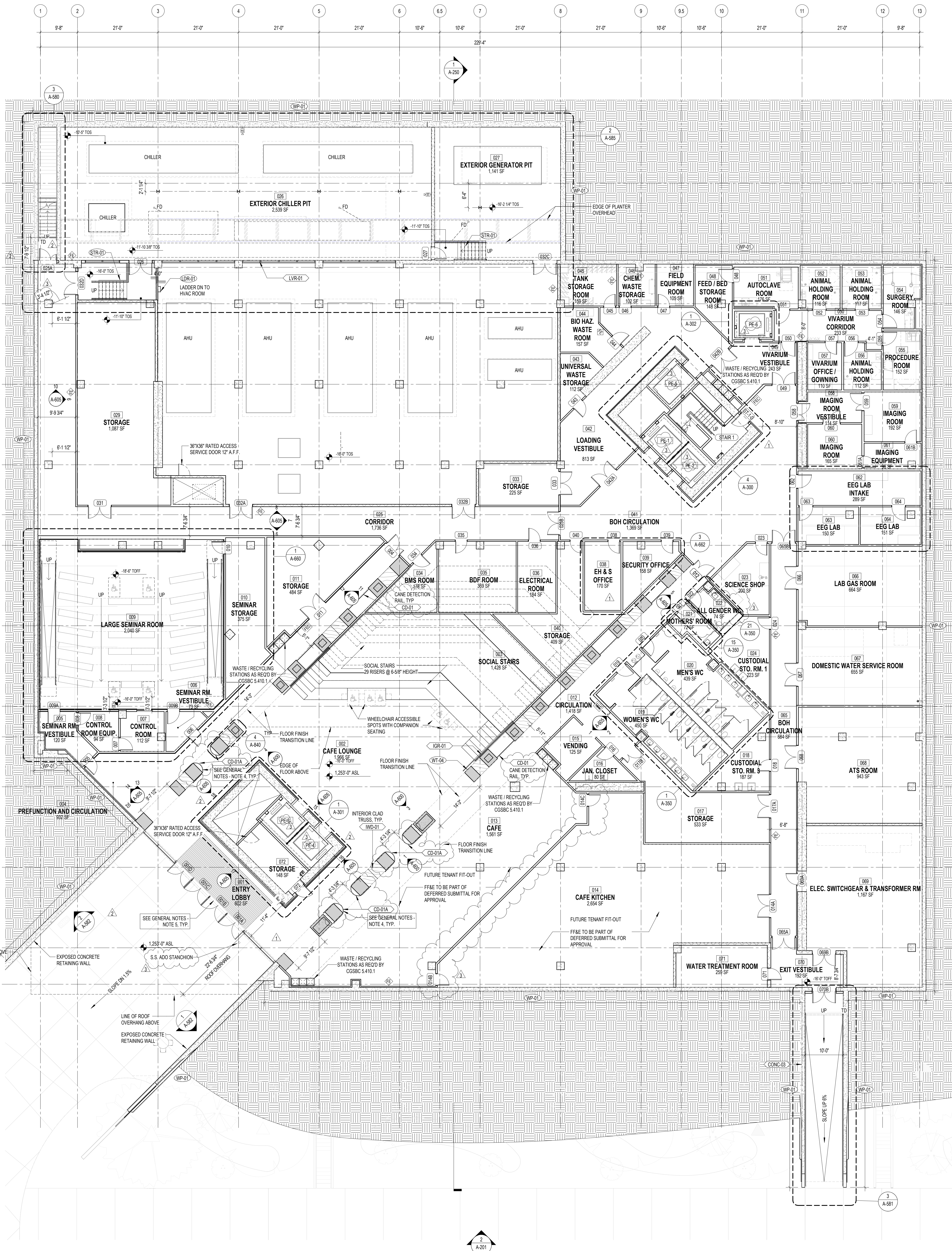
THESE DRAWINGS ARE INSTRUMENTS OF SERVICE AND MAY NOT BE USED FOR OTHER PROJECTS, FOR ADDITIONS TO THIS PROJECT OR COMPLETION OF THIS PROJECT BY OTHERS.

KEYPOINTS

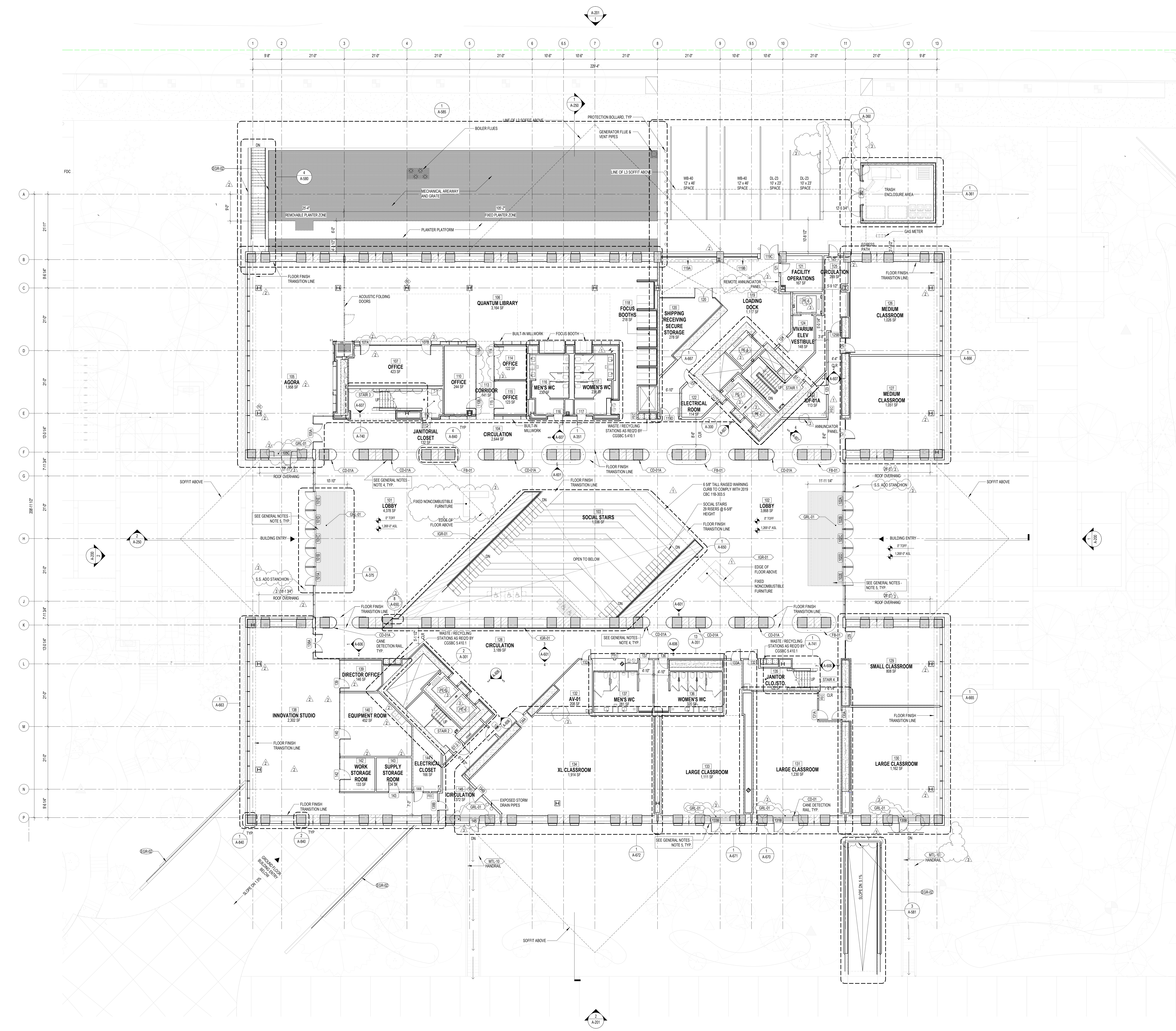


GROUND LEVEL FLOOR PLAN

PROJECT NUMBER: SHEET NUMBER
 2019
 1010
 DATE: As Indicated
 SCALE: As Indicated
 ARCH: E



1 GROUND LEVEL FLOOR PLAN
 A-100
 3/2" = 1'-0"



CONSTRUCTION LEGEND

- TERRACE NON-PAVED AREA
- TERRACE PLANTING AREA
- GRAVEL AREA
- CONCRETE PAVERS
- REMOVABLE WALK-OFF MAT
- FULL HEIGHT INTERIOR GLASS PARTITION
- FULL HEIGHT GIB WALL
- CONCRETE MASONRY UNIT WALL
- UNITIZED CURTAIN WALL SYSTEM
- STOREFRONT SYSTEM
- INTERIOR GLAZED RAILINGS
- EXTERIOR MESH RAILINGS
- EXTERIOR METAL POCKET RAILINGS
- LOADING DOCK COOLING DOOR
- METAL FRAMED SKYLIGHT SYSTEM
- PHOTOVOLTAIC ROOF PANELS
- ROOF DRAIN AND OVERFLOW DRAIN



ROBERT DAY SCIENCES CENTER

CLAREMONT MONTESSORI COLLEGE
 100 W. MONTESSORI STREET
 CLAREMONT, CA 91711, USA
 CLIENT
CLAREMONT MONTESSORI COLLEGE
 100 W. MONTESSORI STREET
 CLAREMONT, CA 91711, USA
 PROJECT NO. 2015-001

BIG BJARKE INGELSGRUP
 225 POND STREET, SUITE 200
 SAN FRANCISCO, CA 94101, USA
 T: +1 415 774 2000
 STRUCTURAL ENGINEER

SAFILLI BOUQUET
 100 W. MONTESSORI STREET, SUITE 200
 CLAREMONT, CA 91711, USA
 T: +1 951 264 8877
 MECHANICAL, ELECTRICAL ENGINEER
 ENERGY ANALYSIS CONSULTANT

ACCQ ENGINEERED SYSTEMS
 888 S. PALM ST.
 CLAREMONT, CA 91711, USA
 T: +1 951 264 8877
 ELECTRICAL SYSTEMS ENGINEER

ROSEMON ELECTRIC
 100 W. MONTESSORI STREET, SUITE 200
 CLAREMONT, CA 91711, USA
 T: +1 951 264 8877
 MEP ELECTRICAL CONSULTANT

WSP USA
 100 W. MONTESSORI STREET, SUITE 200
 CLAREMONT, CA 91711, USA
 T: +1 951 264 8877
 LAMP PLANNING CONSULTANT

JACOBS
 400 S. BROADWAY, SUITE 1000
 SAN FRANCISCO, CA 94101, USA
 T: +1 415 774 2000
 MECHANICAL, ELECTRICAL & SECURITY
 CONSULTANT

ARUP
 170 AVONDALE STREET
 SAN FRANCISCO, CA 94101, USA
 T: +1 415 774 2000
 LEADING DESIGN CONSULTANT

KOM INDOUSTRIAL LIGHTING
 100 W. MONTESSORI STREET, SUITE 200
 CLAREMONT, CA 91711, USA
 T: +1 951 264 8877
 BUILDING ENVELOPE CONSULTANT

HENTGES
 100 W. MONTESSORI STREET, SUITE 200
 CLAREMONT, CA 91711, USA
 T: +1 951 264 8877
 MATERIALS MANAGEMENT
 CONSULTANT

KLEINFELDER
 200 CORPORATE BLVD, SUITE 200
 BOSTON, MA 02108, USA
 T: +1 617 552 1775
 LIFE SAFETY ACCESSIBILITY
 CONSULTANT

CODE CONSULTANTS, INC.
 200 WEST 4TH STREET, 10TH FL.
 SAN FRANCISCO, CA 94101, USA
 T: +1 415 398 0000
 CIVIL ENGINEER

ATLAS CIVIL DESIGN
 600 HAYWARD AVENUE, SUITE 100
 SAN FRANCISCO, CA 94101, USA
 T: +1 415 398 0000
 ROADWAY & TRAFFIC DESIGN
 CONSULTANT

KOA
 200 W. BROADWAY, SUITE 1000
 SAN FRANCISCO, CA 94101, USA
 T: +1 415 398 0000
 VERTICAL TRANSPORTATION
 CONSULTANT

EWCO
 100 EAST BYRNES AVENUE, SUITE 1
 SAN FRANCISCO, CA 94101, USA
 T: +1 415 398 0000
 LANDSCAPE ARCHITECT

MOORE RUBIN YUWELL
 100 W. MONTESSORI STREET, SUITE 200
 CLAREMONT, CA 91711, USA
 T: +1 951 264 8877
 FOOD SERVICE CONSULTANT

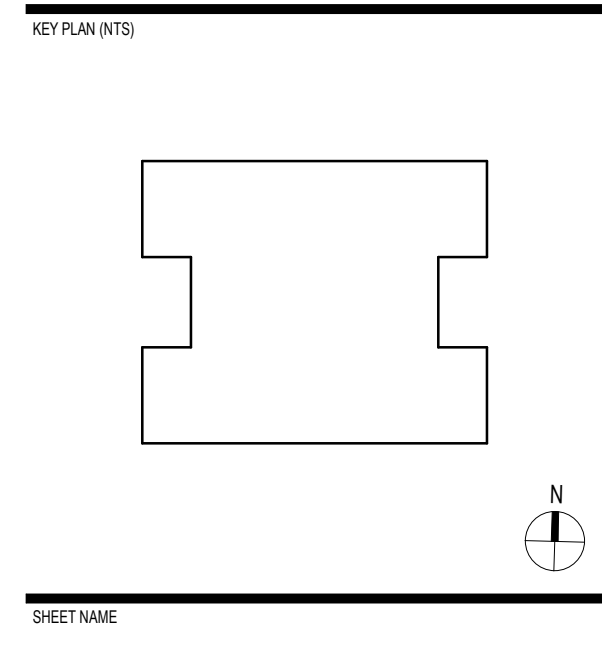
NEXT STEP DESIGN
 100 WEST 4TH STREET, SUITE 100
 SAN FRANCISCO, CA 94101, USA
 T: +1 415 398 0000

GENERAL NOTES

1. FOR DETAILED TERRACE AND SITE LANDSCAPE PLANS REFER TO LANDSCAPE DRAWINGS.
2. ALL VISIBLE STRUCTURAL STEEL MEMBERS TO BE FIREPROTECTED WITH INTUMESCENT PAINT (ES REPORT NO. 5078) OR ENCASED IN CONCRETE AS REQUIRED FOR TYPE 1B CONSTRUCTION.
3. SKYLIGHT AT ROOF LEVEL SIZED TO BE LESS THAN 10% OF ROOF AREA TO COMPLY WITH ENERGY REQUIREMENTS. ACTUAL AREA AS SHOWN IN PLANS IS 3.3% OF ROOF AREA.
4. ALL AREAS AT LOW CLEARANCE ZONES LESS THAN 8' AND FLOOR HEIGHT TRANSITIONS OF LESS THAN 30" TO BE PROVIDED WITH CANE RAILS FOR CANE DETECTION. REFER TO SHEET A-125 FOR CANE RAIL DETAILS. CANE RAILS TO BE CD-01 TYPICAL, UNLESS OTHERWISE NOTED AS CD-02A, B, OR B-01A.
5. SEE SHEET A-375 FOR TYPICAL ENTRY WALK-OFF MAT PLANS AND DETAILS.
6. ALL CLASSROOMS/INSTRUCTIONAL ASSEMBLY SPACES TO BE PROVIDED WITH A PERMANENTLY INSTALLED ASSISTIVE LISTENING SYSTEM. MINIMUM NUMBER OF RECEIVERS TO BE PROVIDED SHALL BE 4% OF THE TOTAL NUMBER OF SEATS PER 2019 CBC 18-219.3. REFER TO A-376 FOR LARGE SEMINAR ROOM ROOM FOR DEVICE QUANTITY. NUMBER OF RECEIVERS IN ALL OTHER CLASSROOMS WITH LOOSE SEATING TO BE PROVIDED WITH FIVE SEPARATE SUBMITTA FOR APPROVAL.
7. WHERE SEATING IS PROVIDED IN ACCESSIBLE SPACES AT LEAST 1% BUT NOT LESS THAN ONE OF EACH TYPE, MUST BE ACCESSIBLE PER CBC 18-212.3, 2010 STANDARDS 212.3. A 30"x48" MINIMUM CLEAR FLOOR SPACE, POSITIONED FOR FORWARD APPROACH WITH KNEE AND TOE CLEARANCE IS REQUIRED AT A BUNK. (CBC 18-206.2, 2010 STANDARDS 206.2).
8. WHERE SEATING OR STANDING SPACE AT TABLES, COUNTERS OR WORK SURFACES IS PROVIDED IN ACCESSIBLE SPACES AT LEAST 5% PERCENT OF THE SEATING AND STANDING SPACES, BUT NOT LESS THAN ONE, MUST BE ACCESSIBLE. (CBC 18-206.1)

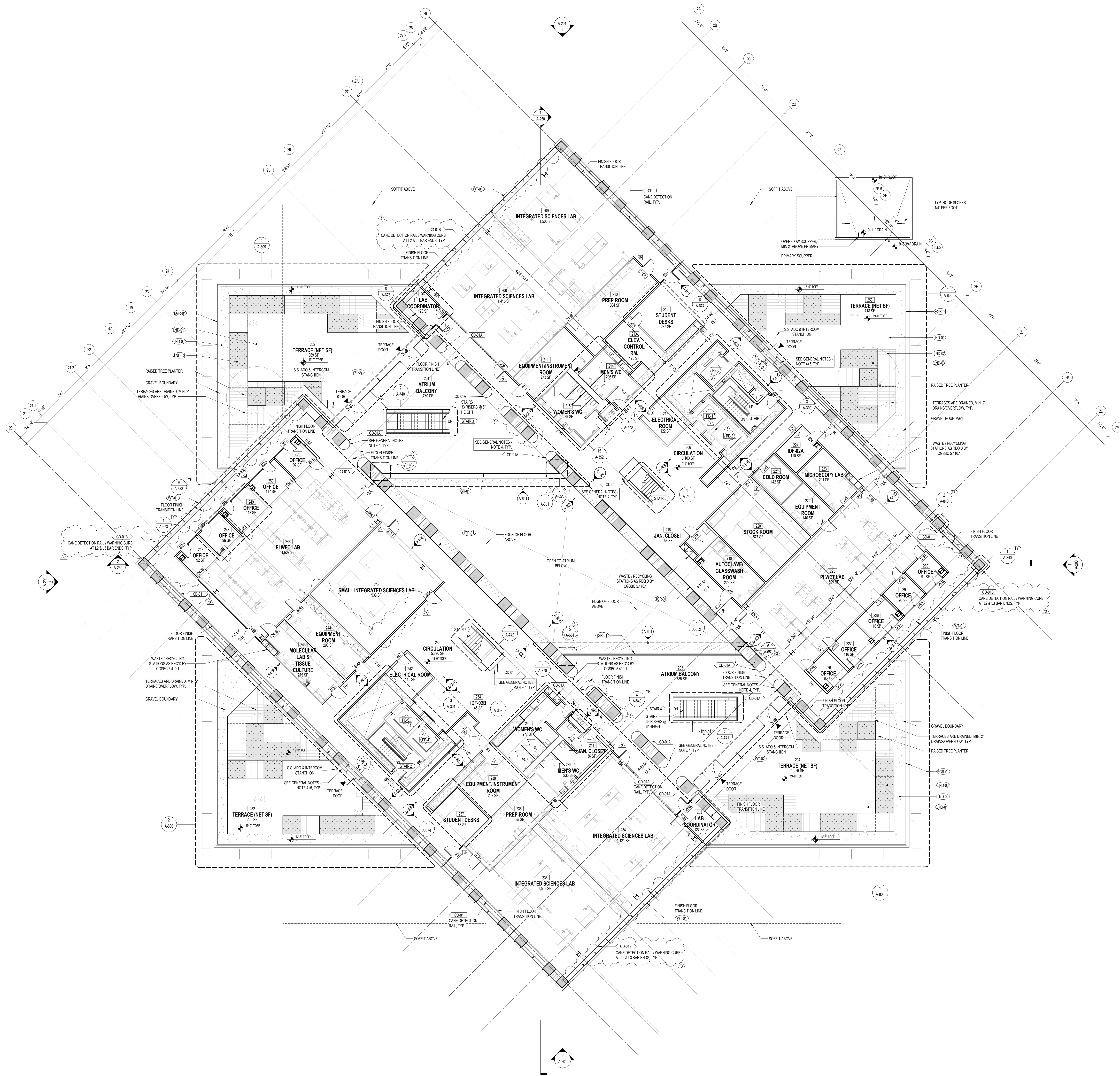
NO.	DATE	ISSUE
1	05-29-2024	BULLETIN 4
2	05-23-2023	BULLETIN 2
3	05-19-2023	BULLETIN 1
4	03-17-2023	ISSUED FOR CONSTRUCTION
5	12-16-2022	50% CONSTRUCTION DOCUMENTS
6	09-19-2022	PLAN CHECK SUBMISSION
7	05-19-2022	PLAN CHECK / 50% DESIGN DEVELOPMENT
8	03-02-2022	100% SCHEMATIC DESIGN
9	01-25-2022	50% SCHEMATIC DESIGN

THESE DRAWINGS ARE INSTRUMENTS OF SERVICE AND MAY NOT BE USED FOR OTHER PROJECTS, FOR ADDITIONS TO THIS PROJECT OR COMPLETION OF THIS PROJECT BY OTHERS.



LEVEL 1 FLOOR PLAN

1 LEVEL 1 FLOOR PLAN
 A-101
 3/22" = 1'-0"

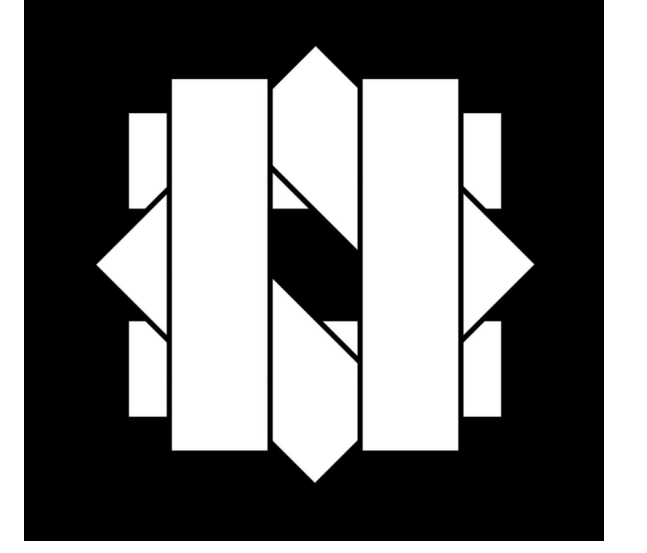


CONSTRUCTION LEGEND

- TERRACE NON-PAVED AREA
- TERRACE PLANTING AREA
- GRAVEL AREA
- CONCRETE PAVERS
- REMOVABLE WALK-OFF MAT
- FULL HEIGHT INTERIOR GLASS PARTITION
- FULL HEIGHT GIB WALL
- CONCRETE MASONRY UNIT WALL
- UNITIZED CURTAIN WALL SYSTEM
- STOREFRONT SYSTEM
- INTERIOR GLAZED RAILINGS
- EXTERIOR MESH RAILINGS
- EXTERIOR METAL PICKET RAILINGS
- LOADING DOCK COILING DOOR
- METAL FRAMED SKYLIGHT SYSTEM
- PHOTOVOLTAIC ROOF PANELS
- ROOF DRAIN AND OVERFLOW DRAIN

GENERAL NOTES

1. FOR DETAILED TERRACE AND SITE LANDSCAPE PLANS REFER TO LANDSCAPE DRAWINGS.
2. ALL VISIBLE STRUCTURAL STEEL FRAMING MEMBERS TO BE FIREPROOFED WITH INTUMESCENT PAINT (ES REPORT NO. 1078) OR ENCASED IN CONCRETE AS REQUIRED FOR TYPE 1B CONSTRUCTION.
3. SKYLIGHT AT ROOF LEVEL, SIZED TO BE LESS THAN 10% OF ROOF AREA TO COMPLY WITH ENERGY REQUIREMENTS. ACTUAL AREA AS SHOWN IN PLANS IS 3.0% OF ROOF AREA.
4. ALL AREAS AT LOW CLEARANCE ZONES LESS THAN 8' AND FLOOR HEIGHT TRANSITIONS OF LESS THAN 30" TO BE PROVIDED WITH CANE RAILS FOR CANE DETECTION. REFER TO SHEET A-163 FOR CANE RAIL DETAILS. CANE RAILS TO BE CD-01A TYPICAL, UNLESS OTHERWISE NOTED AS CD-01A, FB-01 OR FB-01A.
5. SEE SHEET A-375 FOR TYPICAL ENTRY WALK OFF MAT PLANS AND DETAILS.
6. ALL CLASSROOMS/INSTRUCTIONAL ASSEMBLY SPACES TO BE PROVIDED WITH A PERMANENTLY INSTALLED ASSISTIVE LISTENING SYSTEM. MINIMUM NUMBER OF RECEIVERS TO BE PROVIDED SHALL BE 4% OF THE TOTAL NUMBER OF SEATS PER 2010 IBC 11B-219.3. A 30" MINIMUM CLEAR FLOOR SPACE, POSITIONED FOR FORWARD APPROACH WITH KNEE AND TOE CLEARANCE IS REQUIRED AT A SEAT. (IBC 11B-206.2, 2010 STANDARDS 603.2)
7. WHERE SINKS ARE PROVIDED IN ACCESSIBLE SPACES, AT LEAST 5%, BUT NOT LESS THAN ONE OF EACH TYPE, MUST BE ACCESSIBLE PER IBC 11B-203.3, 2010 STANDARDS 312.3. A 30" MINIMUM CLEAR FLOOR SPACE, POSITIONED FOR FORWARD APPROACH WITH KNEE AND TOE CLEARANCE IS REQUIRED AT A SINK. (IBC 11B-206.2, 2010 STANDARDS 603.2)
8. WHERE SEATING OR STANDING SPACE AT TABLES, COUNTERS OR WORK SURFACES IS PROVIDED IN ACCESSIBLE SPACES, AT LEAST 5% PERCENT OF THE SEATING AND STANDING SPACES, BUT NOT LESS THAN ONE, MUST BE ACCESSIBLE. (IBC 11B-206.1)



ROBERT DAY SCIENCES CENTER

CLAREMONT MCKENNA COLLEGE
 100 W. CLAREMONT BOULEVARD
 CLAREMONT, CA 91711 USA
 CLIENT
 CLAREMONT MCKENNA COLLEGE
 100 W. CLAREMONT BOULEVARD
 CLAREMONT, CA 91711 USA
 PROJECT NO. 2015-001

BIG BLARKE INGELS GROUP
 225 HANCOCK STREET
 CLAREMONT, CA 91711 USA
 T: 951.261.0000
 STRUCTURAL ENGINEER

SAFILI BOUQUET
 100 HANCOCK STREET, SUITE 200
 CLAREMONT, CA 91711 USA
 T: 951.261.0000
 MECHANICAL, ELECTRICAL ENGINEER
 DESIGN PARTIAL CONSULTANT

ACCO ENGINEERS SYSTEMS
 888 S. PALM ST.
 CLAREMONT, CA 91711 USA
 T: 951.261.0000
 ELECTRICAL & HVAC ENGINEER

ROSEMON ELECTRIC
 100 HANCOCK STREET, SUITE 200
 CLAREMONT, CA 91711 USA
 T: 951.261.0000
 MEP ELECTRICAL CONSULTANT

WSP USA
 100 HANCOCK STREET, SUITE 200
 CLAREMONT, CA 91711 USA
 T: 951.261.0000
 LAB PLANNING CONSULTANT

JACOBS
 400 S. BROADWAY, SUITE 1000
 SAN ANTONIO, TX 78210 USA
 T: 214.343.0000
 ARCHITECTURAL & SECURITY CONSULTANT

ARUP
 170 W. 14TH STREET
 NEW YORK, NY 10011 USA
 T: 212.512.2000
 LEARNING DESIGN CONSULTANT

KOM ARCHITECTURAL LIGHTING
 2500 AVENUE 101, SUITE 100
 SAN ANTONIO, TX 78205 USA
 T: 214.522.1111
 BUILDING ENVELOPE CONSULTANT

HENTGES
 100 HANCOCK STREET, SUITE 200
 CLAREMONT, CA 91711 USA
 T: 951.261.0000
 MATERIALS MANAGEMENT CONSULTANT

KLENFELDER
 200 CORPORATE BLVD, SUITE 200
 BOSTON, MA 02114 USA
 T: 617.552.7173
 LIFE SAFETY ACCESSIBILITY CONSULTANT

CODE CONSULTANTS, INC.
 225 WEST 40TH STREET, 10TH FL.
 NEW YORK, NY 10018 USA
 T: 212.229.8888
 CIVIL ENGINEER

ATLAS CIVIL DESIGN
 600 HANCOCK STREET, SUITE 100
 SAN ANTONIO, TX 78210 USA
 T: 214.522.0000
 ROADWAY & TRAFFIC DESIGN CONSULTANT

KOA
 210 W. SHREVEWOOD AVE
 SAN ANTONIO, TX 78207 USA
 T: 214.522.0000
 VERTICAL TRANSPORTATION CONSULTANT

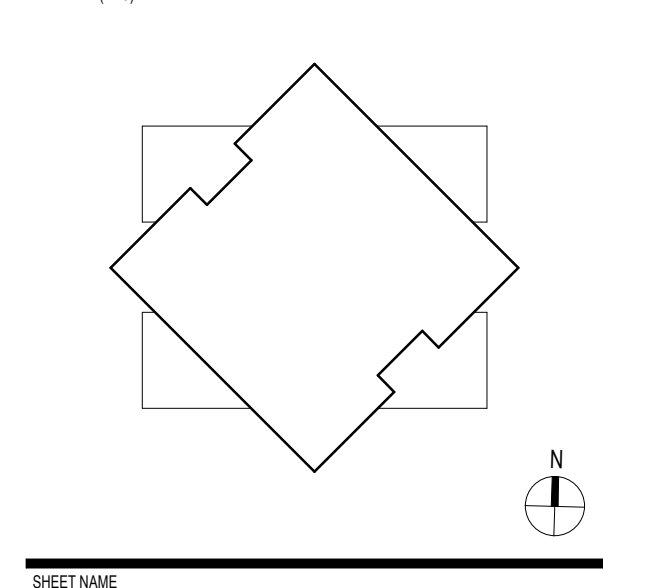
EWCO
 100 EAST PINE AVE, SUITE 1
 MILWAUKEE, WI 53212 USA
 T: 414.224.0000
 LANDSCAPE ARCHITECT

MOORE RUBLE YUDILL
 100 HANCOCK STREET, SUITE 200
 CLAREMONT, CA 91711 USA
 T: 951.261.0000
 FOOD SERVICE CONSULTANT

NEXT STEP DESIGN
 100 HANCOCK STREET, SUITE 200
 CLAREMONT, CA 91711 USA
 T: 951.261.0000

NO.	DATE	ISSUE
1	05.29.2024	BULLETIN 4
2	05.23.2023	BULLETIN 2
1	05.19.2023	BULLETIN 1
1	03.17.2023	ISSUES FOR CONSTRUCTION
1	12.16.2022	50% CONSTRUCTION DOCUMENTS
1	09.19.2022	PLAN CHECK SUBMISSION
1	05.13.2022	PLAN CHECK / 50% DESIGN DEVELOPMENT
1	03.02.2022	100% SCHEMATIC DESIGN
1	01.20.2022	50% SCHEMATIC DESIGN

THESE DRAWINGS ARE INSTRUMENTS OF SERVICE AND MAY NOT BE USED FOR OTHER PROJECTS, FOR ADDITIONS TO THIS PROJECT OR COMPLETION OF THIS PROJECT BY OTHERS.

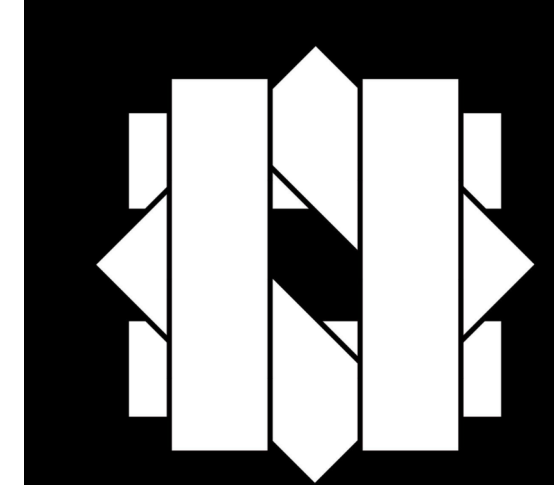


LEVEL 2 FLOOR PLAN

PROJECT NUMBER: SHEET NUMBER
 2015-001
 1010
 DATE: As Indicated
 SCALE: As Indicated
 ARCH: E

CONSTRUCTION LEGEND

- TERRACE NON-PAVED AREA
- TERRACE PLANTING AREA
- GRAVEL AREA
- CONCRETE PAVERS
- REMOVEABLE WALK-OFF MAT
- FULL HEIGHT INTERIOR GLASS PARTITION
- FULL HEIGHT GIB WALL
- CONCRETE MASONRY UNIT WALL
- UNITIZED CURTAIN WALL SYSTEM
- STOREFRONT SYSTEM
- INTERIOR GLAZED RAILINGS
- EXTERIOR MESH RAILINGS
- EXTERIOR METAL PICKET RAILINGS
- LOADING DOCK COOLING DOOR
- METAL FRAMED PICKET SYSTEM
- PHOTOVOLTAIC ROOF PANELS
- ROOF DRAIN AND OVERFLOW DRAIN



ROBERT DAY SCIENCES CENTER

CLAREMONT MOHAWK COLLEGE
 880 WASHINGTON BOULEVARD
 CLAREMONT, CA 91711 USA
 CLIENT

CLAREMONT MCKENNA COLLEGE

300 NORTH STREET
 CLAREMONT, CA 91711 USA
 CLIENT

ARCHITECT

BJARKE INGELSGRUP
 225 PONDICHERRY STREET
 SAN FRANCISCO, CA 94108 USA
 T: +1 415 262 0400

MECHANICAL, ELECTRICAL, PLUMBING ENGINEER

ACCQ ENGINEERING SYSTEMS
 888 S PALM BLVD
 SAN ANTONIO, TX 78210 USA
 T: +1 214 343 8877

ELECTRICAL ENGINEER

ROSEMON ELECTRIC
 1000 WILSON AVENUE
 AMERICO, CA 94001 USA
 T: +1 415 251 0888

MEP LEAD CONSULTANT

WSP USA
 600 FORTY-FOURTH STREET
 SAN FRANCISCO, CA 94118 USA
 T: +1 415 398 2888

LAB PLANNING CONSULTANT

JACOBS
 400 S BAY STREET, SUITE 1000
 SAN FRANCISCO, CA 94108 USA
 T: +1 415 774 2888

MECHANICAL, ELECTRICAL, PLUMBING ENGINEER

ARUP
 75 WASHINGTON STREET
 SAN FRANCISCO, CA 94102 USA
 T: +1 415 774 2888

LEADING DESIGN CONSULTANT

KOM ARCHITECTURAL LIGHTING
 1000 CALIFORNIA STREET
 SAN FRANCISCO, CA 94108 USA
 T: +1 415 774 2888

BUILDING ENVELOPE CONSULTANT

HENTGES
 2200 MARKET STREET, SUITE 200
 BERKELEY, CA 94704 USA
 T: +1 415 863 7733

MATERIALS MANAGEMENT CONSULTANT

KLEINFELDER
 200 CORPORATE BLVD, SUITE 200
 SAN FRANCISCO, CA 94108 USA
 T: +1 415 398 2888

LIFE SAFETY/ACCESSIBILITY CONSULTANT

CODE CONSULTANTS, INC.
 230 WEST 10TH STREET, 10TH FLOOR
 SAN FRANCISCO, CA 94103 USA
 T: +1 415 224 2888

CIVIL ENGINEER

ATLAS CIVIL DESIGN
 600 FORTY-FOURTH STREET
 SAN FRANCISCO, CA 94108 USA
 T: +1 415 398 2888

ROADWAY & TRAFFIC DESIGN CONSULTANT

KOA
 240 W DRANESWOOD AVE
 SAN FRANCISCO, CA 94108 USA
 T: +1 415 398 2888

VEHICLE TRANSPORTATION CONSULTANT

EWOC
 100 EAST PEARSON AVENUE, SUITE 1
 SAN FRANCISCO, CA 94108 USA
 T: +1 415 398 2888

LANDSCAPE ARCHITECT

MOORE RUBIN YUDELL
 1000 CALIFORNIA STREET
 SAN FRANCISCO, CA 94108 USA
 T: +1 415 398 2888

FOOD SERVICE CONSULTANT

NEXT STEP DESIGN
 400 WEST STREET
 SAN FRANCISCO, CA 94108 USA
 T: +1 415 398 2888

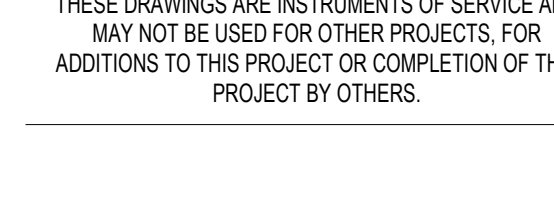
ISSUE TRACKING

NO.	DATE	ISSUE
1	05-29-2024	BULLETIN 4
2	10-23-2023	BULLETIN 2
3	03-17-2023	ISSUED FOR CONSTRUCTION
4	02-16-2022	50% CONSTRUCTION DOCUMENTS
5	09-18-2022	PLAN CHECK SUBMISSION
6	05-13-2022	PLAN CHECK / 50% DESIGN DEVELOPMENT
7	03-02-2022	100% SCHEMATIC DESIGN
8	01-25-2022	50% SCHEMATIC DESIGN

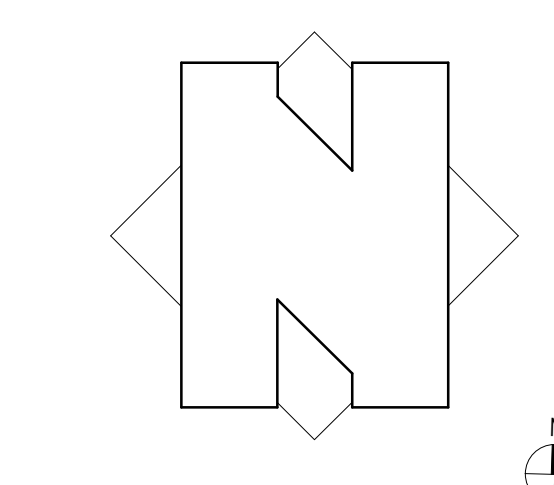
REVISIONS

NO.	DATE	ISSUE
1	05-29-2024	BULLETIN 4
2	10-23-2023	BULLETIN 2
3	03-17-2023	ISSUED FOR CONSTRUCTION
4	02-16-2022	50% CONSTRUCTION DOCUMENTS
5	09-18-2022	PLAN CHECK SUBMISSION
6	05-13-2022	PLAN CHECK / 50% DESIGN DEVELOPMENT
7	03-02-2022	100% SCHEMATIC DESIGN
8	01-25-2022	50% SCHEMATIC DESIGN

THESE DRAWINGS ARE INSTRUMENTS OF SERVICE AND MAY NOT BE USED FOR OTHER PROJECTS, FOR ADDITIONS TO THIS PROJECT OR COMPLETION OF THIS PROJECT BY OTHERS.



SHEET NAME



SHEET NUMBER

2019

DATE

As Indicated

SCALE

AS SHOWN

PROJECT NUMBER

2019

DATE

As Indicated

SCALE

AS SHOWN

PROJECT NUMBER

2019

DATE

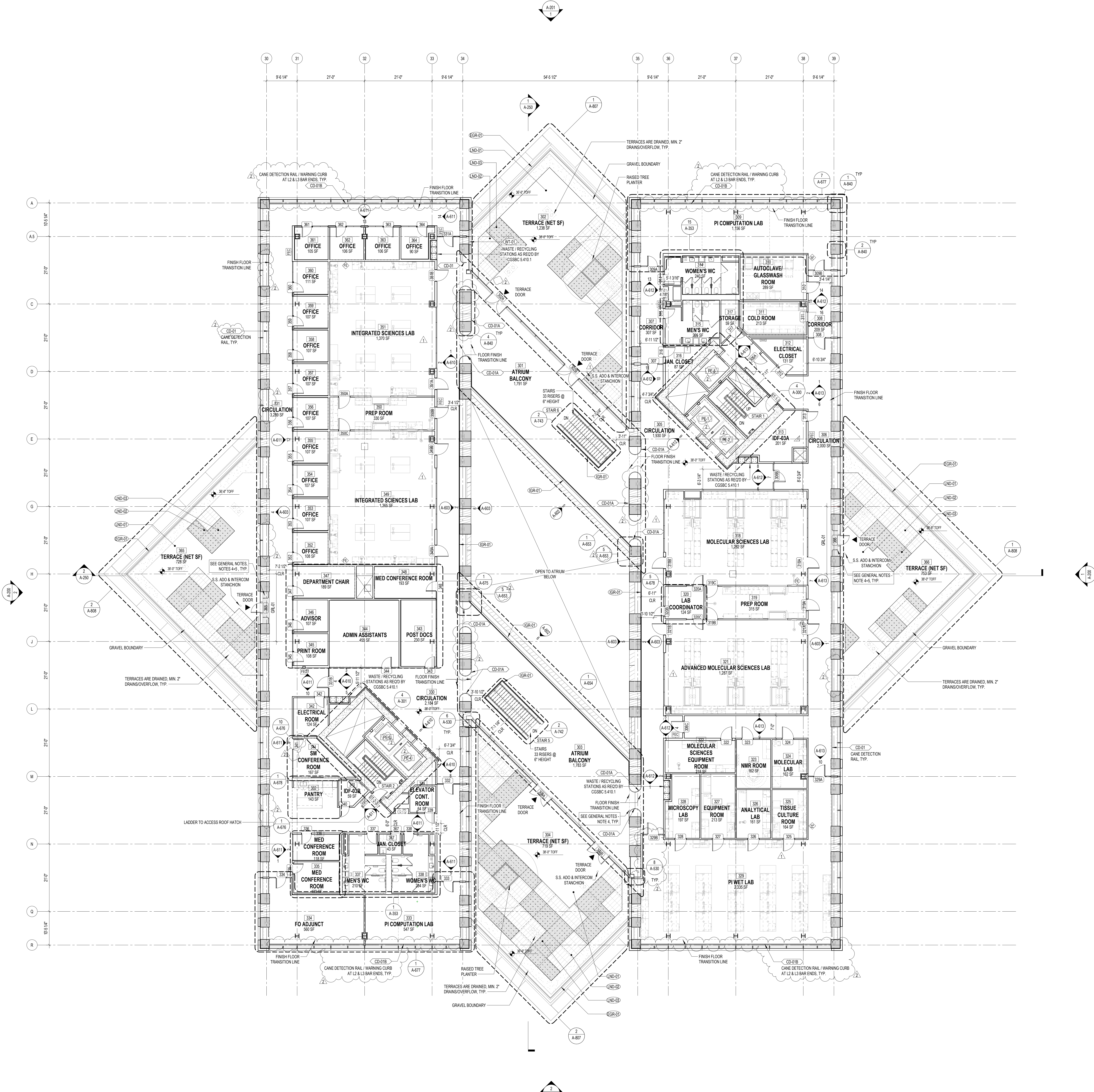
As Indicated

SCALE

AS SHOWN

GENERAL NOTES

- FOR DETAILED TERRACE AND SITE LANDSCAPE PLANS REFER TO LANDSCAPE DRAWINGS.
- ALL VISIBLE STRUCTURAL STEEL FRAMING MEMBERS TO BE FIREPROOFED WITH INTUMESCENT PAINT (SEE REPORT NO. 1076) OR ENCASED IN CONCRETE AS REQUIRED FOR TYPE 1B CONSTRUCTION.
- SKYLIGHT AT ROOF LEVEL SIZED TO BE LESS THAN 10% OF ROOF AREA TO COMPLY WITH ENERGY REQUIREMENTS. ACTUAL AREA AS SHOWN IN PLANS IS 3.3% OF ROOF AREA.
- ALL AREAS AT LOW CLEARANCE ZONES LESS THAN 8' AND FLOOR HEIGHT TRANSITIONS OF LESS THAN 30" TO BE PROVIDED WITH CANE RAILS FOR CANE DETECTION. REFER TO SHEET A-165 FOR CANE RAIL DETAILS. CANE RAILS TO BE CD-01 TYPICAL, UNLESS OTHERWISE NOTED AS CD-0A, FB-01 OR FB-0A.
- SEE SHEET A-375 FOR TYPICAL ENTRY WALK OFF MAT PLANS AND DETAILS.
- ALL CLASSROOMS/INSTRUCTIONAL ASSEMBLY SPACES TO BE PROVIDED WITH A PERMANENTLY INSTALLED ASSISTIVE LISTENING SYSTEM. MINIMUM NUMBER OF RECEIVERS TO BE PROVIDED SHALL BE 4% OF THE TOTAL NUMBER OF SEATS PER 2019 IBC 10B-219.3. REFER TO A-650 FOR LARGE SEMINAR ROOM #009 FOR DEVICE QUANTITY. NUMBER OF RECEIVERS IN ALL OTHER CLASSROOMS WITH LOOSE SEATING TO BE PROVIDED WITH FFBE REFERRED SUBMITTA FOR APPROVAL.
- WHERE SINKS ARE PROVIDED IN ACCESSIBLE SPACES, AT LEAST 5%, BUT NOT LESS THAN ONE OF EACH TYPE, MUST BE ACCESSIBLE PER IBC 119-212.3, 2010 STANDARDS 712.3. A 30" MINIMUM CLEAR FLOOR SPACE, POSITIONED FOR FORWARD APPROACH WITH KNEE AND TOE CLEARANCE IS REQUIRED AT A SINK. (ICC 118-606.2, 2010 STANDARDS 603.2).
- WHERE SEATING OR STANDING SPACE AT TABLES, COUNTERS OR WORK SURFACES IS PROVIDED IN ACCESSIBLE SPACES, AT LEAST 5 PERCENT OF THE SEATING AND STANDING SPACES, BUT NOT LESS THAN ONE, MUST BE ACCESSIBLE. (ICC 118-226.1)



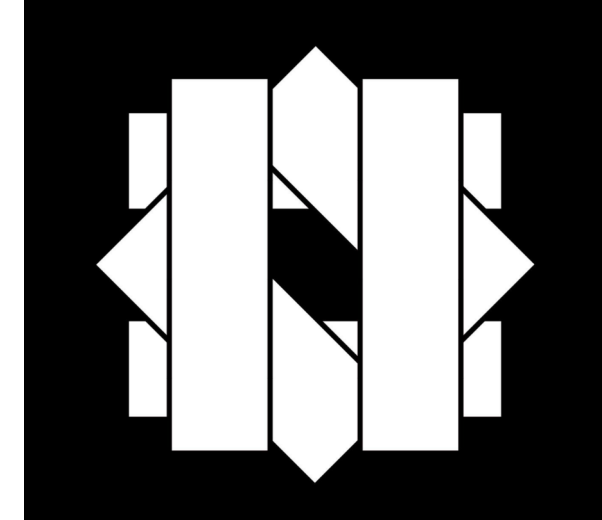
1 LEVEL 3 FLOOR PLAN
 A-103
 3/27 - 11/17

LEVEL 3 FLOOR PLAN

A-103

CONSTRUCTION LEGEND

- TERRACE NON-PAVED AREA
- TERRACE PLANTING AREA
- GRAVEL AREA
- CONCRETE PAVERS
- REMOVABLE WALK-OFF MAT
- FULL HEIGHT INTERIOR GLASS PARTITION
- FULL HEIGHT GIB WALL
- CONCRETE MASONRY UNIT WALL
- UNITIZED CURTAIN WALL SYSTEM
- STOREFRONT SYSTEM
- INTERIOR GLAZED RAILINGS
- EXTERIOR MESH RAILINGS
- EXTERIOR METAL PICKET RAILINGS
- LOADING DOCK COOLING DOOR
- METAL FRAMED SKYLIGHT SYSTEM
- PHOTOVOLTAIC ROOF PANELS
- ROOF DRAIN AND OVERFLOW DRAIN



ROBERT DAY SCIENCES CENTER

CLAREMONT MCKENNA COLLEGE
 600 NORTH GARDEN BOULEVARD
 CLAREMONT, CA 91711, USA
 CLIENT
CLAREMONT MCKENNA COLLEGE
 600 NORTH STREET
 CLAREMONT, CA 91711, USA
 PROJECT NO. 2019-001

BIG BJARKE INGELSGRUP
 225 FIFTH AVENUE, SUITE 200
 BROOKLYN, NY 10001, USA
 T: +1 212 268 4447
 STRUCTURAL ENGINEER

SAFARI BOUQUET
 1350 AVENUE OF THE STARS, SUITE 100
 LOS ANGELES, CA 90061, USA
 T: +1 310 551 8888
 MECHANICAL/ELECTRICAL ENGINEER
ACCIO ENGINEERING SYSTEMS
 888 S AVENUE 107
 SAN JOSE, CA 95128, USA
 T: +1 415 284 8877
 ENERGY ANALYSIS CONSULTANT

ROSEMON ELECTRIC
 1350 AVENUE OF THE STARS, SUITE 100
 LOS ANGELES, CA 90061, USA
 T: +1 310 551 8888
 ELECTRICAL ENGINEER
ROSEMON ELECTRIC
 1350 AVENUE OF THE STARS, SUITE 100
 LOS ANGELES, CA 90061, USA
 T: +1 310 551 8888
 MEP ELECTRICAL CONSULTANT

WSP USA
 600 FORTY-NINTH STREET, SUITE 200
 SAN FRANCISCO, CA 94133, USA
 T: +1 415 774 2888
 MEP ELECTRICAL CONSULTANT

JACOBS
 601 B STREET, SUITE 1000
 SAN FRANCISCO, CA 94102, USA
 T: +1 415 224 2800
 LABOR PLANNING CONSULTANT
ARUP
 270 AVENUE STREET
 SAN FRANCISCO, CA 94102, USA
 T: +1 415 624 2000
 LABOR PLANNING CONSULTANT

KOM ARCHITECTURAL LIGHTING
 2500 CALIFORNIA STREET, SUITE 200
 SAN FRANCISCO, CA 94115, USA
 T: +1 415 774 2888
 LIGHTING DESIGN CONSULTANT

HEINTZES
 2500 CALIFORNIA STREET, SUITE 200
 SAN FRANCISCO, CA 94115, USA
 T: +1 415 774 2888
 BUILDING ENVELOPE CONSULTANT

KLEINFELDER
 2500 CALIFORNIA STREET, SUITE 200
 SAN FRANCISCO, CA 94115, USA
 T: +1 415 774 2888
 MATERIALS/ENVIRONMENT CONSULTANT

CODE CONSULTANTS, INC.
 2500 CALIFORNIA STREET, SUITE 200
 SAN FRANCISCO, CA 94115, USA
 T: +1 415 774 2888
 LIFE SAFETY/ACCESSIBILITY CONSULTANT

ATLAS CIVIL DESIGN
 600 FORTY-NINTH STREET, SUITE 200
 SAN FRANCISCO, CA 94133, USA
 T: +1 415 774 2888
 CIVIL ENGINEER

KOA
 2500 CALIFORNIA STREET, SUITE 200
 SAN FRANCISCO, CA 94115, USA
 T: +1 415 774 2888
 ROADWAY & TRAFFIC DESIGN CONSULTANT

EWCO
 100 EAST PINE AVE, SUITE 1
 SAN FRANCISCO, CA 94102, USA
 T: +1 415 224 2800
 SPECIAL TRANSPORTATION CONSULTANT

MOORE RUBIN YUDELL
 800 CALIFORNIA STREET, SUITE 200
 SAN FRANCISCO, CA 94102, USA
 T: +1 415 774 2888
 LANDSCAPE ARCHITECT

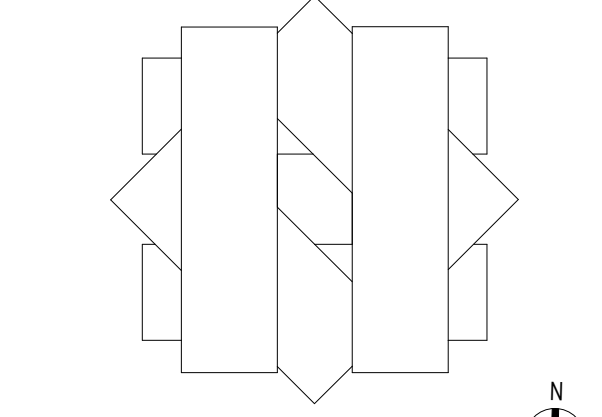
NEXT STEP DESIGN
 100 EAST PINE AVE, SUITE 1
 SAN FRANCISCO, CA 94102, USA
 T: +1 415 224 2800
 FOOD SERVICE CONSULTANT

GENERAL NOTES

1. FOR DETAILED TERRACE AND SITE LANDSCAPE PLANS REFER TO LANDSCAPE DRAWINGS.
2. ALL VISIBLE STRUCTURAL STEEL FRAMING MEMBERS TO BE FIREPROOFED WITH INTUMESCENT PAINT (SEE REPORT NO. 1078) OR ENCASED IN CONCRETE AS REQUIRED FOR TYPE 1B CONSTRUCTION.
3. SKYLIGHT AT ROOF LEVEL, SIZED TO BE LESS THAN 10% OF ROOF AREA TO COMPLY WITH ENERGY REQUIREMENTS. ACTUAL AREA AS SHOWN IN PLANS IS 3.1% OF ROOF AREA.
4. ALL AREAS AT LOW CLEARANCE ZONES LESS THAN 8'0" AND FLOOR HEIGHT TIGHTENINGS OF LESS THAN 3'0" TO BE PROVIDED WITH CANE RAILS FOR CANE DETECTION. REFER TO SHEET A-165 FOR CANE RAIL DETAILS. CANE RAILS TO BE CD-01 TYPICAL, UNLESS OTHERWISE NOTED AS CD-0A, FB-01 OR FB-02A.
5. SEE SHEET A-375 FOR TYPICAL ENTRY WALK OFF MAT PLANS AND DETAILS.
6. ALL CLASSROOMS/INSTRUCTIONAL ASSEMBLY SPACES TO BE PROVIDED WITH A PERMANENTLY INSTALLED ASSISTIVE LISTENING SYSTEM. MINIMUM NUMBER OF RECEIVERS TO BE PROVIDED SHALL BE 4% OF THE TOTAL NUMBER OF SEATS PER 2019 IBC 109.2.19. REFER TO A-800 FOR LARGE SEMINAR ROOM #200 FOR DEVICE QUANTITY. NUMBER OF RECEIVERS IN ALL OTHER CLASSROOMS WITH LOOSE SEATING TO BE PROVIDED WITH FFBE REFERRED SUBMITTA FOR APPROVAL.
7. WHERE SINKS ARE PROVIDED IN ACCESSIBLE SPACES, AT LEAST 5%, BUT NOT LESS THAN ONE OF EACH TYPE, MUST BE ACCESSIBLE PER IBC 119-203.3, 2010 STANDARDS 703.3. A 30" MINIMUM CLEAR FLOOR SPACE, POSITIONED FOR FORWARD APPROACH WITH KNEE AND TOE CLEARANCE IS REQUIRED AT A SINK. (IBC 119-206.2, 2010 STANDARDS 603.2)
8. WHERE SEATING OR STANDING SPACE AT TABLES, COUNTERS OR WORK SURFACES IS PROVIDED IN ACCESSIBLE SPACES, AT LEAST 5 PERCENT OF THE SEATING AND STANDING SPACES, BUT NOT LESS THAN ONE, MUST BE ACCESSIBLE. (IBC 119-226.1)

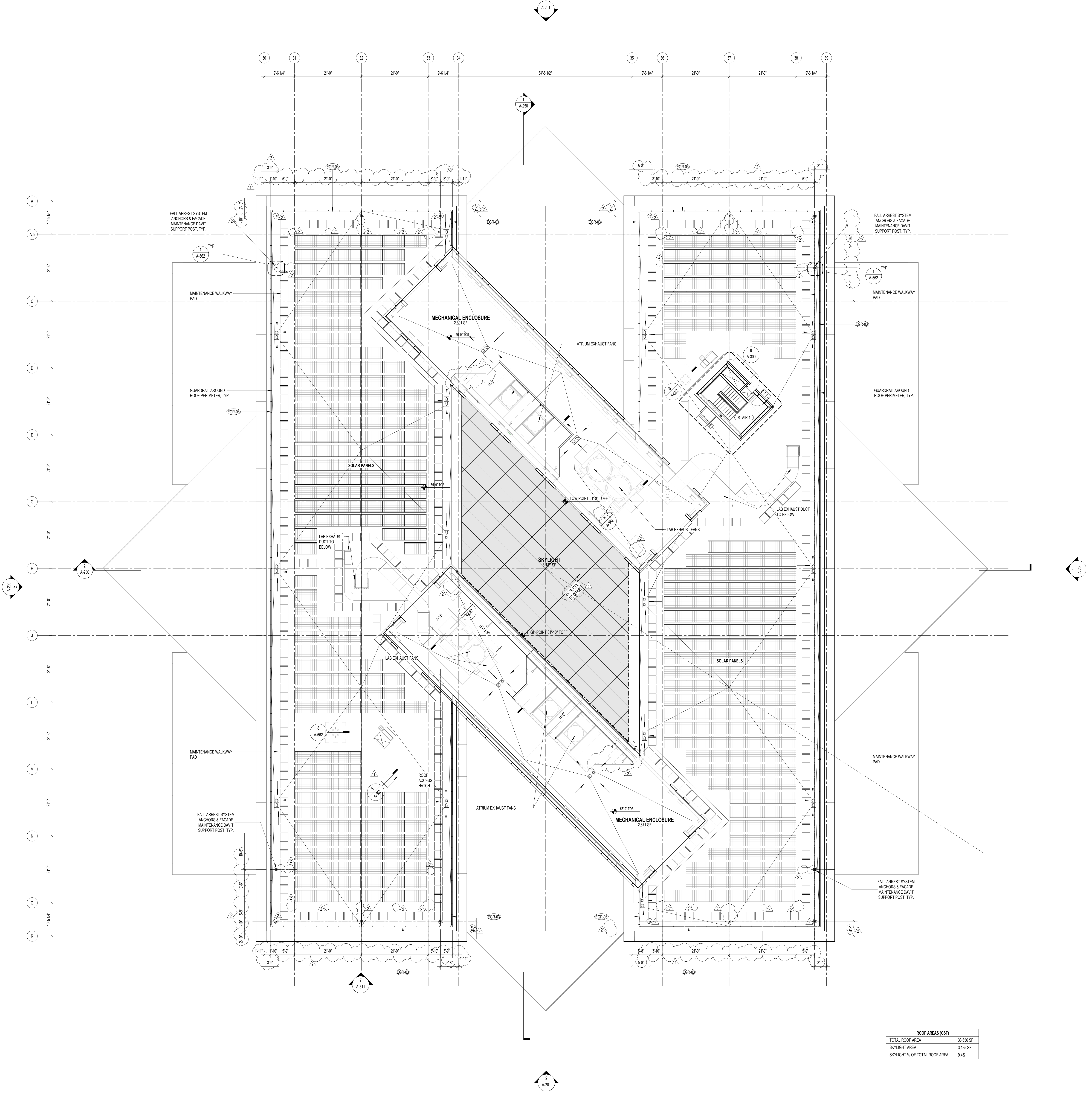
NO.	DATE	ISSUE
1	05-29-2024	BULLETIN 4
2	10-23-2023	BULLETIN 2
3	03-17-2023	ISSUED FOR CONSTRUCTION
4	12-16-2022	50% CONSTRUCTION DOCUMENTS
5	09-19-2022	PLAN CHECK SUBMISSION
6	05-13-2022	PLAN CHECK / 50% DESIGN DEVELOPMENT
7	03-02-2022	100% SCHEMATIC DESIGN
8	01-26-2022	50% SCHEMATIC DESIGN

THESE DRAWINGS ARE INSTRUMENTS OF SERVICE AND MAY NOT BE USED FOR OTHER PROJECTS, FOR ADDITIONS TO THIS PROJECT OR COMPLETION OF THIS PROJECT BY OTHERS.



ROOF LEVEL FLOOR PLAN

PROJECT NUMBER: SHEET NUMBER
 2019
 DRAW NUMBER
 SCALE: As Indicated
 DATE: 05/29/2024
 ARCH: E



ROOF AREAS (GSF)	
TOTAL ROOF AREA	33,696 SF
SKYLIGHT AREA	1,185 SF
SKYLIGHT % OF TOTAL ROOF AREA	3.49%

1 ROOF LEVEL FLOOR PLAN
 A-104
 3/2" = 1'-0"